



93 Furnace Road, Bedworth, CV12 9AP
£325,000

Wow – take a look at this beautifully extended three-bedroom semi-detached home, presented to an exceptional standard throughout and finished to a high specification. Offering spacious and versatile accommodation, this impressive property is ready for its next owners to move straight in and enjoy.

The ground floor welcomes you with an inviting entrance hallway leading into a stylish living room, complete with attractive wooden flooring and a contemporary electric fireplace, creating a warm and comfortable space to relax. To the rear, the property opens into a fantastic open-plan kitchen and dining area, ideal for modern family living and entertaining. The kitchen is fitted with sleek units, tiled flooring, granite worktops and an integrated dishwasher. Further enhancing the ground floor accommodation are a convenient WC, a generous utility room and a modern shower room.

One of the standout features of the home is the impressive conservatory, flooded with natural light and providing an excellent additional reception space with direct access to the beautifully landscaped rear garden.

To the first floor, the property offers a spacious principal bedroom with fitted wardrobes, a second well-proportioned double bedroom, a generous single bedroom and a contemporary family bathroom finished to a high standard. Externally, the property enjoys outstanding kerb appeal with a large gated driveway providing ample off-road parking. The rear garden is simply stunning, thoughtfully designed to create the perfect outdoor retreat. Features include an attractive patio area with ambient lighting, a well-maintained lawn and a dedicated hot tub area, making it ideal for both relaxing and entertaining.

This exceptional home has been meticulously maintained and upgraded by the current owners, with no detail overlooked. Early internal viewing is highly recommended to fully appreciate the quality, space and lifestyle this wonderful property has to offer.

Approach/ Driveway



Kitchen

18'11 x 10'11 (5.77m x 3.33m)



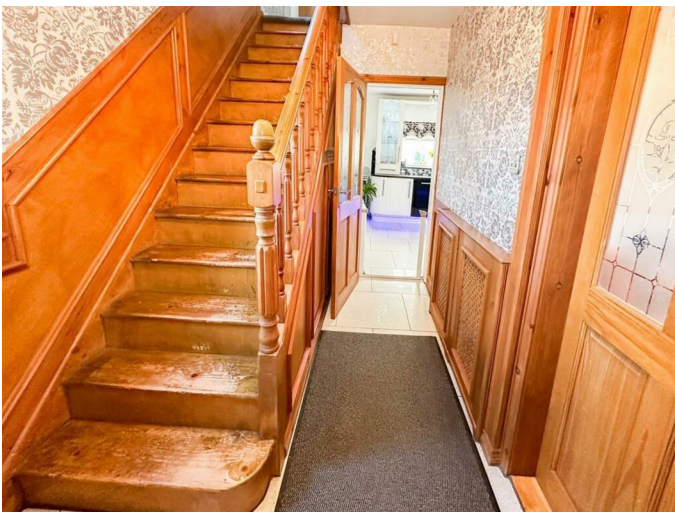
W.C

Utility

14'2 x 12'8 (4.32m x 3.86m)



Entrance Hallway



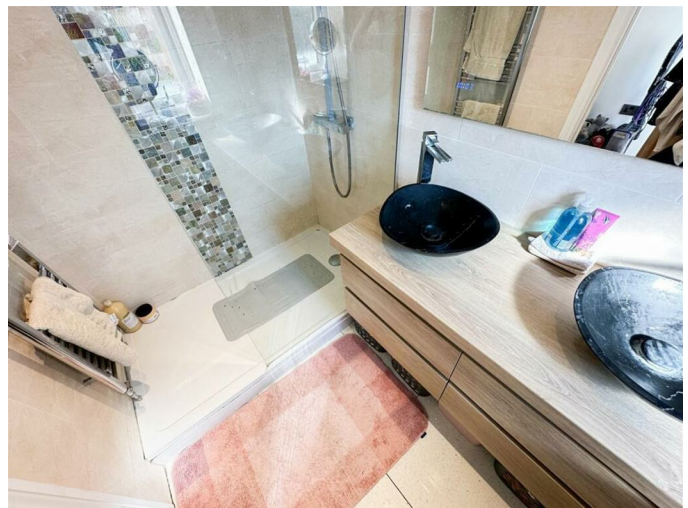
Living Room

14'11 x 11'11 (4.55m x 3.63m)



Shower Room

7'8 x 5'1 (2.34m x 1.55m)



Dining Room

9'5 x 7'11 (2.87m x 2.41m)



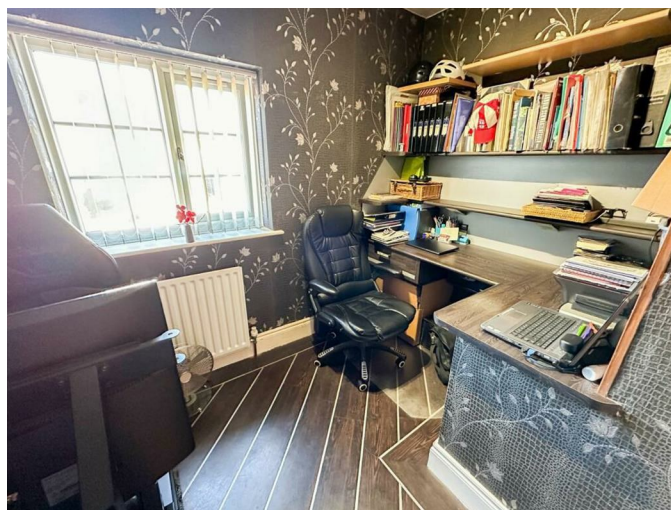
Bedroom Two

11'11 x 10'1 (3.63m x 3.07m)



Bedroom Three

9'11 x 6'8 (3.02m x 2.03m)



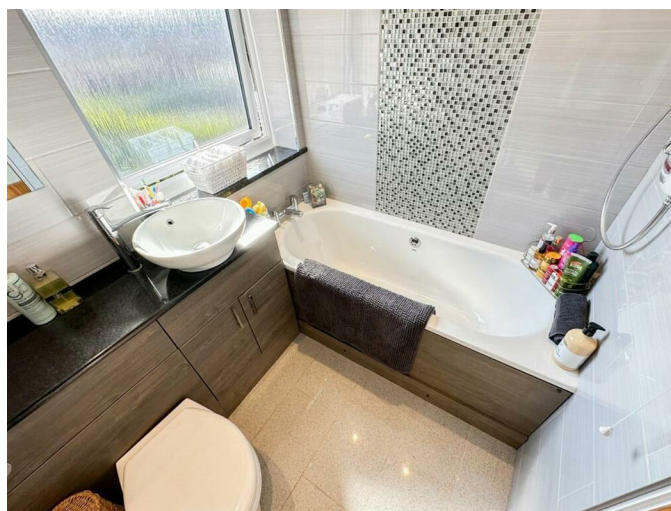
Conservatory

11'2 x 9'5 (3.40m x 2.87m)



Family Bathroom

6'11 x 5'11 (2.11m x 1.80m)



Upstairs Landing

Bedroom One

14;11 x 8'11 (4.27m;3.35m x 2.72m)



Rear Garden



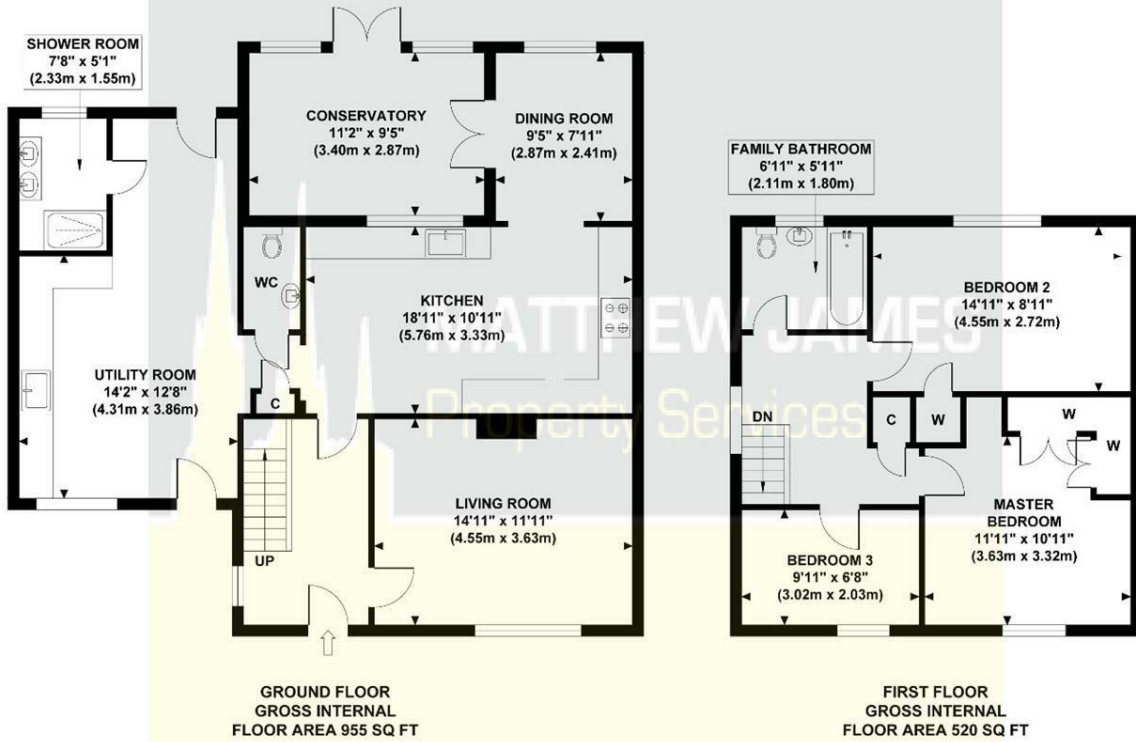
Aerial Views



Floor Plan

93 FURNACE ROAD

Approximate Gross Internal Area 1475 sq ft / 137.0 sq m

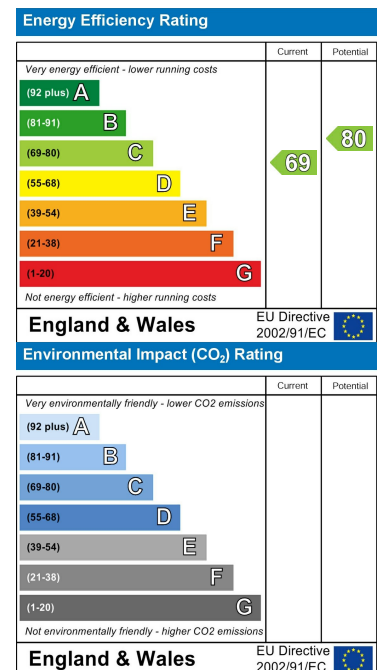


Although every attempt has been made to ensure accuracy, all measurements are approximate and no responsibility is taken for any error, omission, or mid-statement. This floor plan is for illustrative purposes only and not to scale. Measured in accordance to RICS standards.

Area Map



Energy Efficiency Graph



These particulars, whilst believed to be accurate are set out as a general outline only for guidance and do not constitute any part of an offer or contract. Intending purchasers should not rely on them as statements of representation of fact, but must satisfy themselves by inspection or otherwise as to their accuracy. No person in this firm's employment has the authority to make or give any representation or warranty in respect of the property.

CONTACT INFORMATION

24a Warwick Row, Coventry CV1 1EY

02477 170170

info@matthewjames.uk.com

www.matthewjames.uk.com

Facebook

Twitter